



## GS Technical Data Sheet

### GS GS-GT12B-4

#### Performance

Voltage	12
Capacity (10-hour)	10Ah
Capacity (20-hour)	10.5Ah
CCA @ -18°C	210A

#### Dimensions (±2mm)

Length	150mm
Width	69mm
Height	130mm

#### Weights & Measures

Mean Weight with Acid	4.1kg
Acid Volume	0.5l

#### Technology

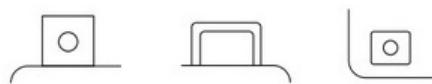
Technology	Cast Ca/Ca
Separator	AGM



#### Cell Assembly Layout



#### Terminal Type - 11



Data Sheet generated on 17/01/2018 - E&OE